



Mission: Promote, encourage, and recognize the advance of Art, Science, and Practice of Mechanical Engineering in the field of Internal Combustion Engines.

Vision: To be a prominent information resource by providing a forum for the documentation, worldwide dissemination, and recognition of the technical achievements and ideas of the people engaged in internal combustion engines

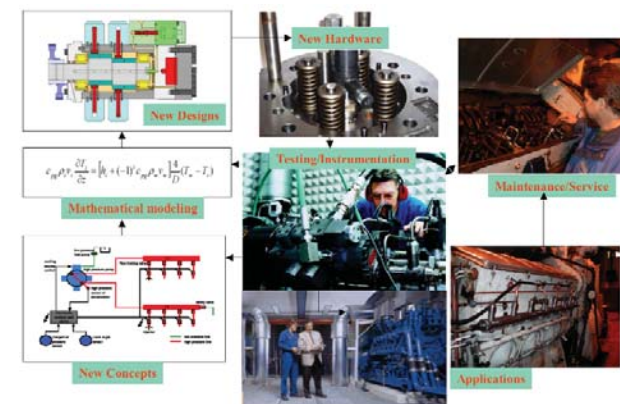
Conference Model

- Target Users: Practicing Engineers, Scientists, Managers, Technicians, Students, and Policymakers dealing with I.C. Engines
- Target Areas: Power, Marine, Industrial, Off-highway, Locomotives, and Heavy duty on-highway
- Conference Fee: ~\$250 to \$300 (advance registration) includes free proceedings, breakfasts, refreshments, and lunches
- Schedule: Starts with evening Reception, two-days of technical presentations, and Technical Tour on the final day
- Meeting Host: Industry and University Members
- Sponsorships: Industry partners help sponsor bi-annual meetings
- Student Involvement: Introducing Paper & Design competitions, Scholarships/Awards

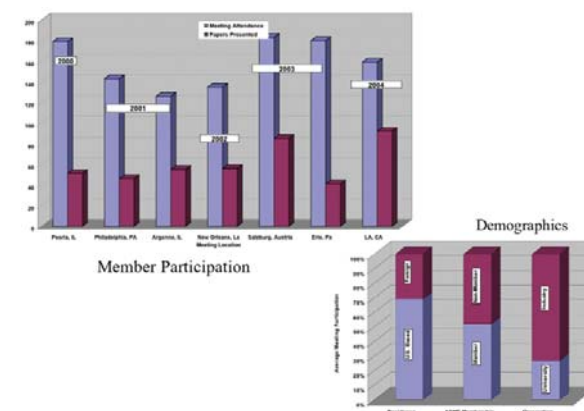
Additional Features

- Globalization:
 - Collaborate with other societies
 - Participation with CIMAC
 - Conference Venue - Outside US – (once in 3-yrs)
- Conferences outside US:
 - Salzburg, Austria (May '03)
 - Kyoto, Japan w/CIMAC (June '04)
 - Ottawa, Canada (Sept '05)
- Tours: Organize and host tours of research/user facilities to complement technical presentations
- Exhibits: Tabletop and Corporate exhibits at conferences
- Social: Spouse's tour in most conferences, Early bird Reception, Chair's hospitality and much more.....

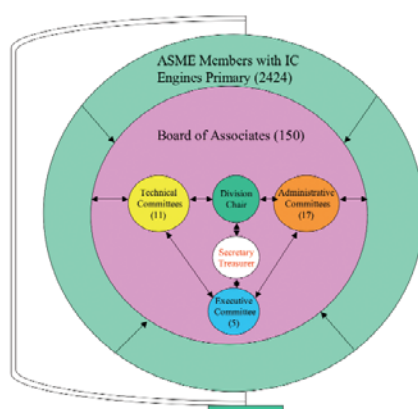
Scope of Topics We Discuss



Conference Participation



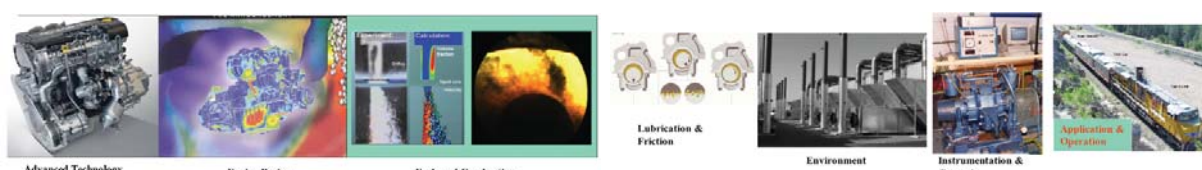
ICED Organization



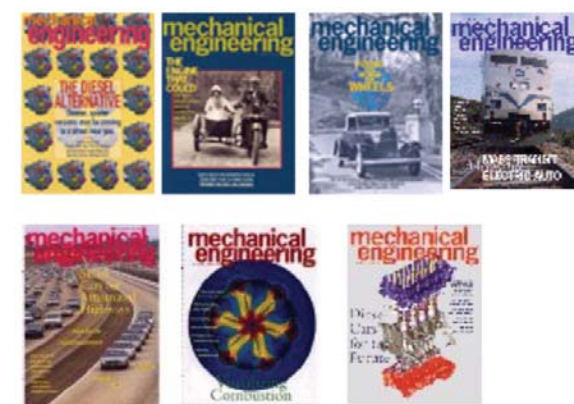
Publications



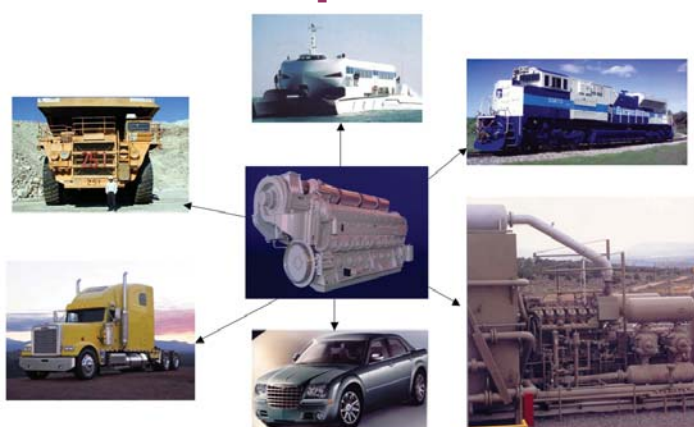
Technical Committees



ICE on the Cover



Breadth of Topics We Examine



Member Recognition

